

# Time-line Spreadsheet

STEP	PHASE	JAN	FEB	MAR	APR	MAY	JUN	JUL	AUG	SEP	OCT	NOV	DEC
1	Complete overall operating budget assessment												
2	Complete site pavement assessment												
3	Complete overall operating budget												
4	Finalize pavement maintenance budget/scope												
	Prepare requests for proposals												
	Complete pavement maintenance bidding process												
5	Award pavement maintenance contract												
	Complete pavement maintenance												
	Assess work and start next year's calendar planning												

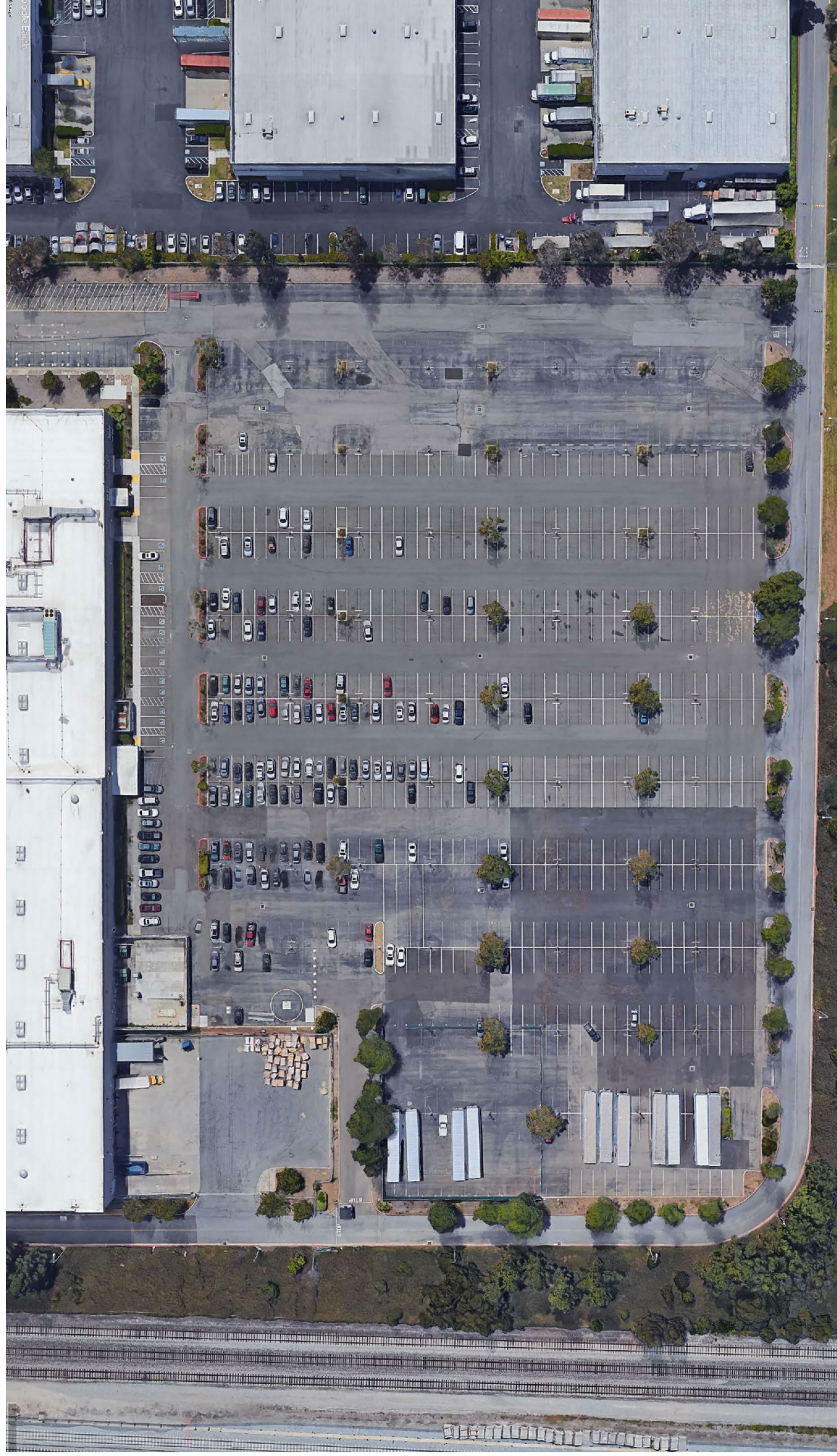
# Assessment Checklist

#	STEP	COMMENTS	COMPLETED?
1	Get ready to do assessment	<ul style="list-style-type: none"> <li>• Create a site map using Google Earth</li> <li>• Select a paving contractor to help with assessment</li> </ul>	
2	Complete assessment by walking the property with a contractor	<ul style="list-style-type: none"> <li>• Define general status for paved surfaces</li> <li>• Make notes on site plan to show:               <ul style="list-style-type: none"> <li>• Potholes and failed areas</li> <li>• Walkways, sidewalks, and paths</li> <li>• Broken or failing curbs and gutters requiring concrete repairs</li> <li>• Trip hazards</li> <li>• ADA compliance issues</li> <li>• Tree root damage</li> <li>• Curb painting (red curbs and handicap)</li> <li>• Signage: ADA and special parking</li> <li>• Parking layout issues</li> <li>• Sports courts</li> <li>• Drainage issues</li> </ul> </li> <li>• Identify where paved surfaces are showing the impact of:               <ul style="list-style-type: none"> <li>• Garbage truck travel</li> <li>• High traffic flow</li> <li>• Landscaping impact</li> <li>• Tree root damage</li> </ul> </li> </ul>	
3	Develop estimates for each action	<ul style="list-style-type: none"> <li>• Create a spreadsheet showing each repair action</li> <li>• Show units for each repair (square footage, lineal feet, etc.)</li> </ul>	

# Modified PASER Rating System: Non-Highway

RATING	SURFACE	VISIBLE DISTRESS	GENERAL CONDITION/TREATMENT
10	Excellent	<ul style="list-style-type: none"> <li>None</li> </ul>	<ul style="list-style-type: none"> <li>New paved surface not ready for seal coat</li> </ul>
8	Very Good	<ul style="list-style-type: none"> <li>Few longitudinal cracks (expansion)</li> <li>All cracks sealed or tight (open 1/4" or less)</li> <li>Very slight or no raveling, surface shows some traffic wear</li> <li>No patching or very few patches in excellent condition</li> </ul>	<ul style="list-style-type: none"> <li>Paved 3-5 years earlier requiring seal coat preventative maintenance</li> <li>Recent seal coat</li> <li>Little or no maintenance required</li> <li>First sign of aging; maintain with routine crack filling and seal coat</li> </ul>
6	Fair	<ul style="list-style-type: none"> <li>Slight raveling (loss of lines)</li> <li>Longitudinal cracking (open 1/4" to 1/2" and some spaced less than 10 feet apart)</li> <li>First sign of alligator cracking</li> <li>Occasional patching in good condition</li> </ul>	<ul style="list-style-type: none"> <li>Show signs of aging, sound structural condition; could extend life with seal coat</li> <li>May require seal coating or nonstructural overlay</li> <li>Up to 10% of surface failed; remove and replace failed area and seal coat entire surface</li> </ul>
4	Poor	<ul style="list-style-type: none"> <li>Surface raveling</li> <li>Multiple longitudinal and transverse cracking</li> <li>Alligator cracking (over 25% of surface)</li> <li>Slight rutting or deflection (1/2" deep or less)</li> <li>Patched in fair to poor condition</li> <li>Occasional potholes</li> </ul>	<ul style="list-style-type: none"> <li>Significant aging and first signs of need for strengthening; would benefit from recycling or overlay</li> <li>Needs patching and major overlay or complete recycling</li> <li>25% of paved surface failed; remove and replace pavement/correct base failure as required and complete overlay/seal coating of remaining paved surface as needed</li> </ul>
2	Very Poor / Failed	<ul style="list-style-type: none"> <li>Severe alligator cracking (over 25% of surface)</li> <li>Severe deflection</li> <li>Extensive patching in poor condition</li> <li>Potholes</li> <li>Visible pumping</li> </ul>	<ul style="list-style-type: none"> <li>Severe deflection; needs reconstruction with extensive base repair</li> <li>Alligator cracking with visible sub-grade and water</li> <li>Failed; may need total reconstruction</li> </ul>

# Example Google Earth Site Map



# Example Google Earth Site Map



# Example Google Earth Site Map





# PROPOSAL CONTRACT

Date: **4/23/2018**  
 Est. Code: **Sample-Sample Job-AC-CC-SC-ST**  
 Job Site: **Sample Jobsite**  
**123 Sample Street**  
**Sample, CA 94538**  
 Job Contact: **Sample Customer**  
 Bus: **(987) 654-3210**  
 Mob: **(123) 456-7890**  
 Email: **sample@sample.com**  
 Fax:



Proposal #: **98077A**  
 Customer: **Sample Customer**  
**123 Sample Street**  
**Sample, CA 94538**  
 Attn: **Sample Customer**  
 Bus: **(987) 654-3210**  
 Mob: **(123) 456-7890**  
 Email: **sample@sample.com**  
 Fax:

Quantity	Description		Total
1,730 SF	<b>ADA Asphalt Leveling:</b> Grind and remove asphalt as required for conforms. Apply tack oil to entire area to receive leveling. Place and compact asphalt as required to create ADA Stalls and loading zone to be ADA compliant with no slope greater that 2% in any direction. Includes flares to existing asphalt.	\$5.92	\$10,241
LS	<b>ADA Striping, Signage, &amp; Wheelstops:</b> Paint new ADA pavement markings affected by this work. Furnish and install 6 pre-cast concrete wheel stops and 6 ADA signs on metal posts set in concrete footing.	LS	\$3,296
<p><b>NOTES &amp; EXCLUSIONS</b></p> <ol style="list-style-type: none"> <li>1. Excludes permit or inspection fees.</li> <li>2. Asphalt and Concrete work based on 1 continuous phase / move-in on weekdays.</li> <li>3. Seal coat and stripe can be done on weekends in 2 phases.</li> <li>4. Notification and vehicle removal by owners and/or owner representatives.</li> <li>5. Excludes any additional asphalt or any concrete repairs.</li> <li>6. Repairs are based on 4" depth. If actual depth is greater or petromat is encountered, then additional cost may apply. Customer will be notified immediately upon findings if encountered.</li> <li>7. Driving, parking or access of any kind is not permitted in the seal coat areas while it is drying. Any vehicles entering these areas during the drying period (while barricaded or marked off) will get asphalt emulsion on their vehicles and will damage the surface. DRYCO will not be responsible for costs to repair the seal coat.</li> <li>8. Our proposal is based on a current liquid asphalt price of \$428 per ton. For every \$5.00 per ton increase/decrease in the price of liquid asphalt, we will add/deduct \$.50 per ton to the asphalt unit price.</li> <li>9. ADA NOTE: The above proposal is based on a conceptual design. No elevations have taken to confirm that this scope will work. This is an allowance to cover the anticipated cost. Actual field verifications of existing and proposed elevations must be taken to confirm the exact scope of work and may result in a change order to this proposal.</li> </ol>			

DRYCO's Authorized Representative:   
 Ryan Saisi, Estimator

DRYCO proposes to complete the above work for the sum of \$389,724  
 Note: This proposal may be withdrawn if not accepted within 30 days.

Customer Signature: \_\_\_\_\_  
 Sample Customer

Date: \_\_\_\_\_

Payment Terms: DUE UPON RECEIPT OF INVOICE



# Bid Spreadsheet

PLANNED ACTION	QUANTITY	UNIT PRICE	TOTAL
<b>PARKING LOT IMPROVEMENTS</b>			
<b>Concrete Curb Repairs:</b> Demo and remove broken concrete curb at 3 locations. Cut and remove exposed tree roots. Off-haul debris. Form new 12" deep and 6" wide concrete curb. Install 2 rows of #3 rebar. Pour, strip and finish concrete curb.	72 LF	\$89.250	\$6,426
<b>Cement Treated Base Repairs:</b> Grind and remove existing asphalt in designated area. Off-haul and dispose of debris at recycling facility. Treat existing base material with 5% Cement to a depth of 12". Fine grade and compact existing base material in preparation for asphalt paving. Apply tack oil to vertical edges of existing asphalt. Place and compact 4" of new hot mix asphalt in 2 separate lifts.	37,255 SF	\$5.300	\$197,451
<b>4" Asphalt Repairs:</b> Grind and remove asphalt to a depth of 4" in 5 locations. Off-haul debris. Regrade and compact existing base material as required. Apply tack oil to vertical edges of existing asphalt. Place and compact 4" of hot mix asphalt in 2 separate lifts.	6,205 SF	\$4.190	\$25,998
<b>2" Asphalt Mill and Pave:</b> Grind existing asphalt to a depth of 2" in 1 designated location. Off-haul debris. Blow, sweep and clean existing asphalt surface. Install reinforced paving fabric (petromat) over entire area. Place and compact 2" of hot mix asphalt in one lift.	26, 630 SF	\$2.560	\$68,172
<b>Seal Coat (2 Coats, 2 Move):</b> Clean the entire designated pavement surface using power blowers as required. Seal cracks 1/4" and larger with Duro-Flex hot applied crack filler as per manufacturer's specifications. Treat oil spots with Polyoil sealant (heavy oil stains may reappear). Apply a two-coat application of Western Colloid #327 seal coat emulsion over entire surface. Squeegee first coat and spray the second coat for optimum coverage. This work to be completed in 2 phases on weekends.	313,930 SF	\$0.125	\$39,241
<b>Striping:</b> Restripe all existing pavement markings as per present layout. Includes all parking stalls, directional arrows, ADA symbols, and stenciled markings per present layout.	LS	LS	\$9,319
<b>Fencing:</b> Furnish and install approximately 284 LF of 8' tall slatted chain link fence with 3 strands of barb wire. Includes 1 EA 20' opening slide gate. Includes top and bottom rail.	LS	LS	\$17,708
<b>ADA IMPROVEMENTS</b>			
<b>ADA Concrete Walkway:</b> Saw-cut, demolish, and remove existing concrete walkway. Off-haul debris. Grade as required to meet ADA slope requirements. Form new concrete walkway and set #4 rebar at 18" on center. Install dowels into existing concrete. Pour and finish new 4" concrete. Includes truncated domes where required.	530 SF	\$22.400	\$11,872
<b>ADA Asphalt Leveling:</b> Grind and remove asphalt as required for conforms. Apply tack oil to entire area to receive leveling. Place and compact asphalt as required to create ADA Stalls and loading zone to be ADA compliant with no slope greater than 2% in any direction. Includes flares to existing asphalt.	1,730 SF	\$5.920	\$10,241
<b>ADA Striping, Signage, &amp; Wheelstops:</b> Paint new ADA pavement markings affected by this work. Furnish and install 6 pre-cast concrete wheel stops and 6 ADA signs on metal posts set in concrete footing.	LS	LS	\$3,296
<b>TOTAL</b>			<b>\$389,724</b>

# Multi-Year Strategy Spreadsheet

PLANNED ACTION	ESTIMATED COST	MULTIYEAR STRATEGY		
		YEAR 1	YEAR 2	YEAR 3
<b>PARKING LOT IMPROVEMENTS</b>				
<b>Concrete Curb Repairs:</b> Demo and remove broken concrete curb at 3 locations. Cut and remove exposed tree roots. Off-haul debris. Form new 12" deep and 6" wide concrete curb. Install 2 rows of #3 rebar. Pour, strip and finish concrete curb.	\$6,426	\$6,426		
<b>Cement Treated Base Repairs:</b> Grind and remove existing asphalt in designated area. Off-haul and dispose of debris at recycling facility. Treat existing base material with 5% Cement to a depth of 12". Fine grade and compact existing base material in preparation for asphalt paving. Apply tack oil to vertical edges of existing asphalt. Place and compact 4" of new hot mix asphalt in 2 separate lifts.	\$197,451		\$197,451	
<b>4" Asphalt Repairs:</b> Grind and remove asphalt to a depth of 4" in 5 locations. Off-haul debris. Regrade and compact existing base material as required. Apply tack oil to vertical edges of existing asphalt. Place and compact 4" of hot mix asphalt in 2 separate lifts.	\$25,998	\$25,998		
<b>2" Asphalt Mill and Pave:</b> Grind existing asphalt to a depth of 2" in 1 designated location. Off-haul debris. Blow, sweep and clean existing asphalt surface. Install reinforced paving fabric (petromat) over entire area. Place and compact 2" of hot mix asphalt in one lift.	\$68,172	\$68,172		
<b>Seal Coat (2 Coats, 2 Move):</b> Clean the entire designated pavement surface using power blowers as required. Seal cracks 1/4" and larger with Duro-Flex hot applied crack filler as per manufacturer's specifications. Treat oil spots with Polyoil sealant (heavy oil stains may reappear). Apply a two-coat application of Western Colloid #327 seal coat emulsion over entire surface. Squeegee first coat and spray the second coat for optimum coverage. This work to be completed in 2 phases on weekends.	\$39,241			\$39,241
<b>Striping:</b> Restripe all existing pavement markings as per present layout. Includes all parking stalls, directional arrows, ADA symbols, and stenciled markings per present layout.	\$9,319			\$9,319
<b>Fencing:</b> Furnish and install approximately 284 LF of 8' tall slatted chain link fence with 3 strands of barb wire. Includes 1 EA 20' opening slide gate. Includes top and bottom rail.	\$17,708	\$17,708		
<b>ADA IMPROVEMENTS</b>				
<b>ADA Concrete Walkway:</b> Saw-cut, demolish, and remove existing concrete walkway. Off-haul debris. Grade as required to meet ADA slope requirements. Form new concrete walkway and set #4 rebar at 18" on center. Install dowels into existing concrete. Pour and finish new 4" concrete. Includes truncated domes where required.	\$11,872	\$11,872		
<b>ADA Asphalt Leveling:</b> Grind and remove asphalt as required for conforms. Apply tack oil to entire area to receive leveling. Place and compact asphalt as required to create ADA Stalls and loading zone to be ADA compliant with no slope greater than 2% in any direction. Includes flares to existing asphalt.	\$10,241	\$10,241		
<b>ADA Striping, Signage, &amp; Wheelstops:</b> Paint new ADA pavement markings affected by this work. Furnish and install 6 pre-cast concrete wheel stops and 6 ADA signs on metal posts set in concrete footing.	\$3,296	\$3,296		
<b>TOTAL</b>	<b>\$389,724</b>	<b>\$143,713</b>	<b>\$197,451</b>	<b>\$48,560</b>