

Full Depth Reclamation



When older parking lots and paved areas begin to show signs of heaving and deflection, you can be sure saturation is the culprit. As pavement ages, it loses its natural flexibility. Brittle pavement cracks under use and water enters those cracks and exposes the base beneath the pavement to moisture. Once that happens, shifting occurs and you're looking at pavement that is distressed, easily broken, and in need of constant repair.

What's the solution? Full Depth Reclamation.



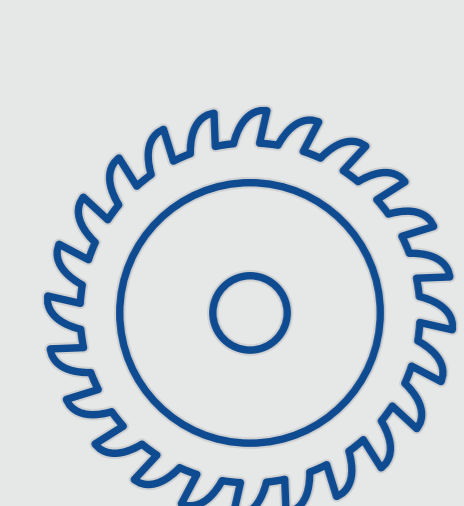
What is Full Depth Reclamation (FDR)?

Full Depth Reclamation is the process of replacing worn-out and damaged pavement by recycling the existing pavement into the base of the new pavement. Instead of laying an entirely new parking lot, the existing pavement is completely reused, strengthened, and smoothed into a newer, stronger, and most importantly, water-resistant pavement.

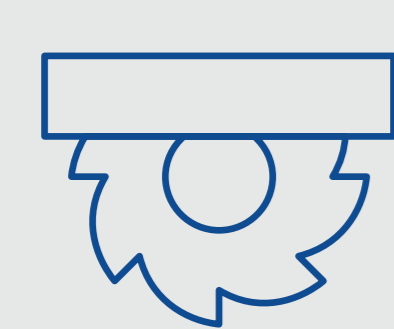


How Does FDR Work?

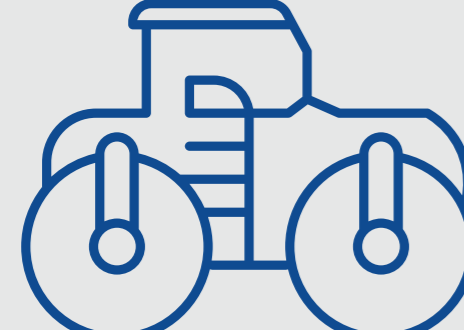
The day begins early. A crew of three to four laborers bring in several key pieces of heavy equipment to start the four step Reclamation process.



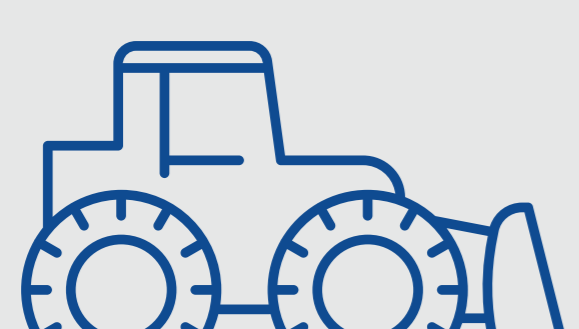
Grind: The existing pavement is broken up and passed through a machine which grinds it into small pieces and spits it back onto the ground. Part of the base layer is also removed, ground up, and mixed into the existing pavement.



Mix: The pulverized pieces are mixed with an aggregate to strengthen the material. This can be cement, lime, or other chemicals. The mix is blended twice. The second time, water is sprinkled on top of the mix.

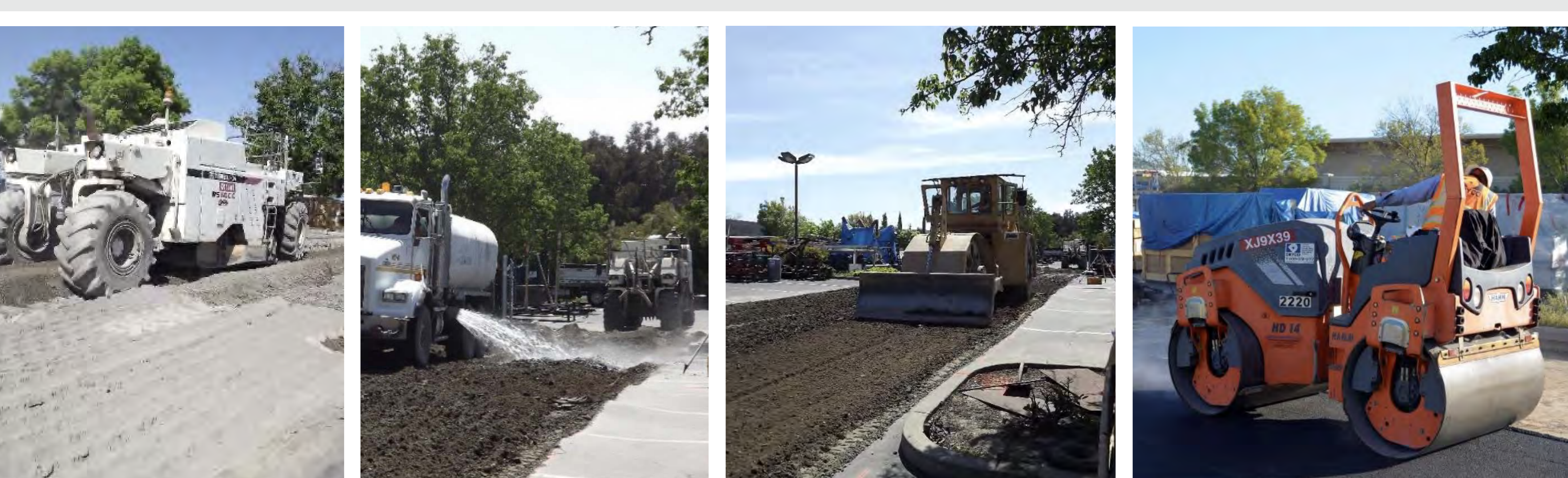


Compact: A heavy, steel-wheeled roller compacts the new base. It smooths out any deformities on the surface.



Grade: The final step in the Reclamation process is grading the new base layer. This ensures a level base layer ready to receive the new asphalt on top.

Once the new surface is graded, it's ready for hot mix asphalt to be added. DRYCO adds two layers to the graded surface for extra strength and stability. We water test the new pavement to ensure proper drainage.



What Are the Benefits of FDR?

FDR is Green

By reusing already existing pavement, we lay down less asphalt and reuse most of the material it takes to rehabilitate your pavement. We also avoid using trucks, which are needed to cart away pavement if we do a complete resurfacing. This lowers our emissions.

FDR Saves Money

It lowers the cost of replacing your pavement by an average of 30%. We use less labor, less material, and less time to rehabilitate pavement than with resurfacing.

FDR Adds Years to the Life of Pavement

The average life extension of your pavement after FDR is 20 to 30 years.

FDR Strengthens Pavement

The combination of old, re-purposed pavement and new aggregate creates a stronger mixture that protects your foundation better.

FDR Saves Time

It takes less time to repair your subgrade than it does to replace it. From start to finish, it's only two days until you have a much stronger, smoother surface.

Why Is DRYCO the Best at FDR?

- We have over 30 years of experience in concrete and asphalt.
- We value satisfaction over a quick buck, and we do the job right every time.
- We always give customers an honest evaluation. If FDR is not a fit for your pavement needs, we will tell you, and recommend the best options.
- We have the right heavy equipment for the job and the experience needed to make it efficient and cost-effective.
- Our greatest asset is customer satisfaction.



When is FDR the Right Choice for Me?

Full depth reclamation is a great solution to cement damage, but only under the right circumstances:

- You have at least 35,000 square feet in pavement. This is when FDR becomes cost-effective.
- Your pavement has widespread damage (cracking, potholes, etc) that cannot be fixed by resurfacing the pavement.
- Your pavement distress is caused by problems in the base layer, not normal wear on the surface.
- Your pavement already has patching on 15% to 20% of its surface.
- You need to increase your pavement's structural capacity for heavier use.

If your lot is at least 35,000 square feet, Full Depth Reclamation may be the best option for you.

Contact us today for a free assessment

[GET ASSESSMENT >](#)